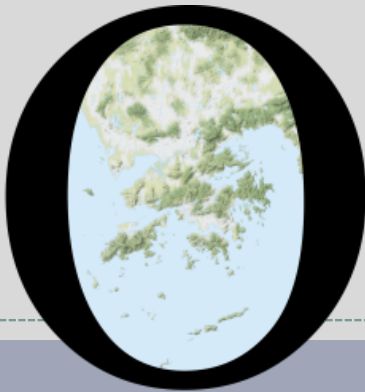


POP



HONG KONG PUBLIC OPINION PROGRAM

HONG KONG PUBLIC OPINION RESEARCH INSTITUTE

香港民意研究所 之 香港民意研究計劃

“We Hongkongers” Panel Survey

Latest Results

May 7, 2021

POP



HONG KONG PUBLIC OPINION PROGRAM

HONG KONG PUBLIC OPINION RESEARCH INSTITUTE

香港民意研究所 之 香港民意研究計劃

限聚指數

Group Gathering Prohibition Index

7/5/2021

樣本資料 - 限聚指數基準調查

Contact Information - Group Gathering Prohibition Index Benchmark Survey

3

	香港民研意見群組成員 HKPOP Panel
調查日期 Survey date	16/4 15:00 – 21/4 15:00
調查方法 Survey method	以電郵接觸群組成員，並於網上完成調查 Online survey
訪問對象 Target population	十二歲或以上的香港市民 Hong Kong residents aged 12+
總成功樣本 Total sample size	6,330
回應比率 Response rate	6.7%
抽樣誤差 Sampling error	95% 置信水平，百分比誤差 +/-1% Sampling error of percentages at +/-1% at 95% confidence level
加權方法 Weighting method	按照1) 政府統計處提供的全港人口年齡及性別分佈統計數字、各區議會人口數字； 2) 選舉事務處提供的區議會選舉結果；3) 常規調查中的特首評分分佈數字，以 「反覆多重加權法」作出調整。 The figures are rim-weighted according to 1) gender-age distribution of Hong Kong population and by District Councils population figures from Census and Statistics Department; 2) Voting results of District Councils Election from Registration and Electoral Office; 3) rating distribution of Chief Executive from regular tracking surveys.

限聚指數

Group Gathering Prohibition Index

4

- **最新調查日期 Latest survey date: 16-21/4/2021 (N=6,330)**
- **上次調查日期 Last survey date: 22-29/3/2021 (N=6,806)**
- **上上次調查日期 Second last survey date: 8-22/3/2021 (N=6,210)**

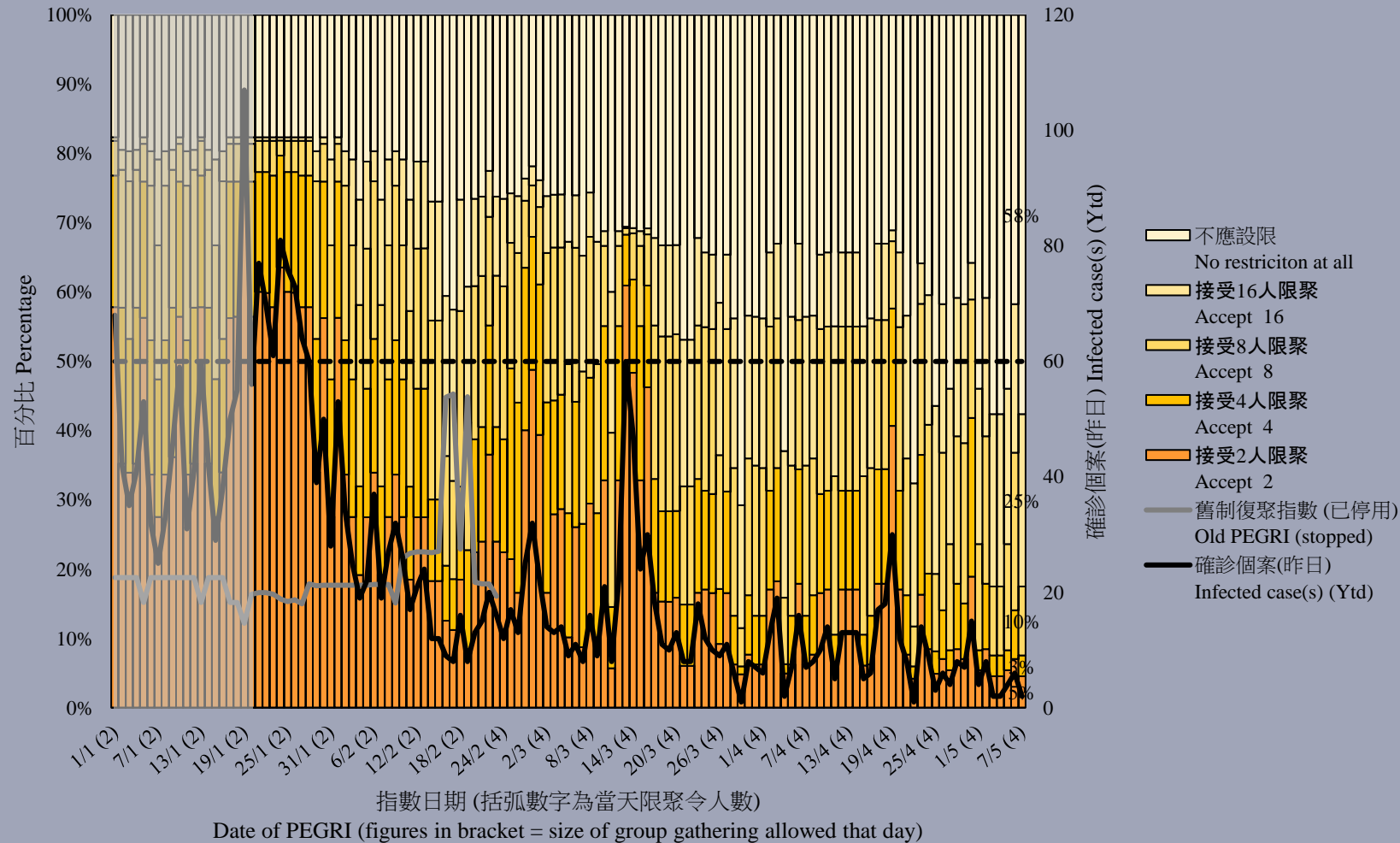
意見題目	Opinion Questions
<p>你認為香港應否無條件全面撤銷「限聚令」？</p> <ul style="list-style-type: none">▪ 應該無條件撤銷「限聚令」▪ 不應該，應視乎疫情而定▪ 不知道／很難說 <p>[追問沒有選擇應該“無條件撤銷「限聚令」”者] 你認為每天新增確診個案數應是多少，才適合將「限聚令」訂於2人？ 你認為每天新增確診個案數應是多少，才適合將「限聚令」訂於4人？ 你認為每天新增確診個案數應是多少，才適合將「限聚令」訂於8人？ 你認為每天新增確診個案數應是多少，才適合將「限聚令」訂於16人？</p> <p>請於以下欄位列舉你認為合適的 [個案數 及 限聚人數] 組合.....</p>	<p>Do you think the regulation prohibiting gatherings of more than a specific number of people in public places should be completely lifted unconditionally in Hong Kong?</p> <ul style="list-style-type: none">▪ Yes, the ban should be lifted unconditionally▪ No, it should depend on the epidemic situation▪ Don't know / hard to say <p>[For respondents NOT answering “Yes, the ban should be lifted unconditionally”] How many newly confirmed cases each day should there be before it would be appropriate to prohibit gatherings of more than 2 people? How many newly confirmed cases each day should there be before it would be appropriate to prohibit gatherings of more than 4 people? How many newly confirmed cases each day should there be before it would be appropriate to prohibit gatherings of more than 8 people? How many newly confirmed cases each day should there be before it would be appropriate to prohibit gatherings of more than 16 people?</p> <p>Please list combinations of [number of cases & number of people allowed in gatherings] that you think is appropriate in the field below:</p>

調查結果 - 限聚接受程度

Survey Result – Group Gathering Prohibition Acceptance Level

5

限聚接受程度 Group Gathering Prohibition Acceptance Level

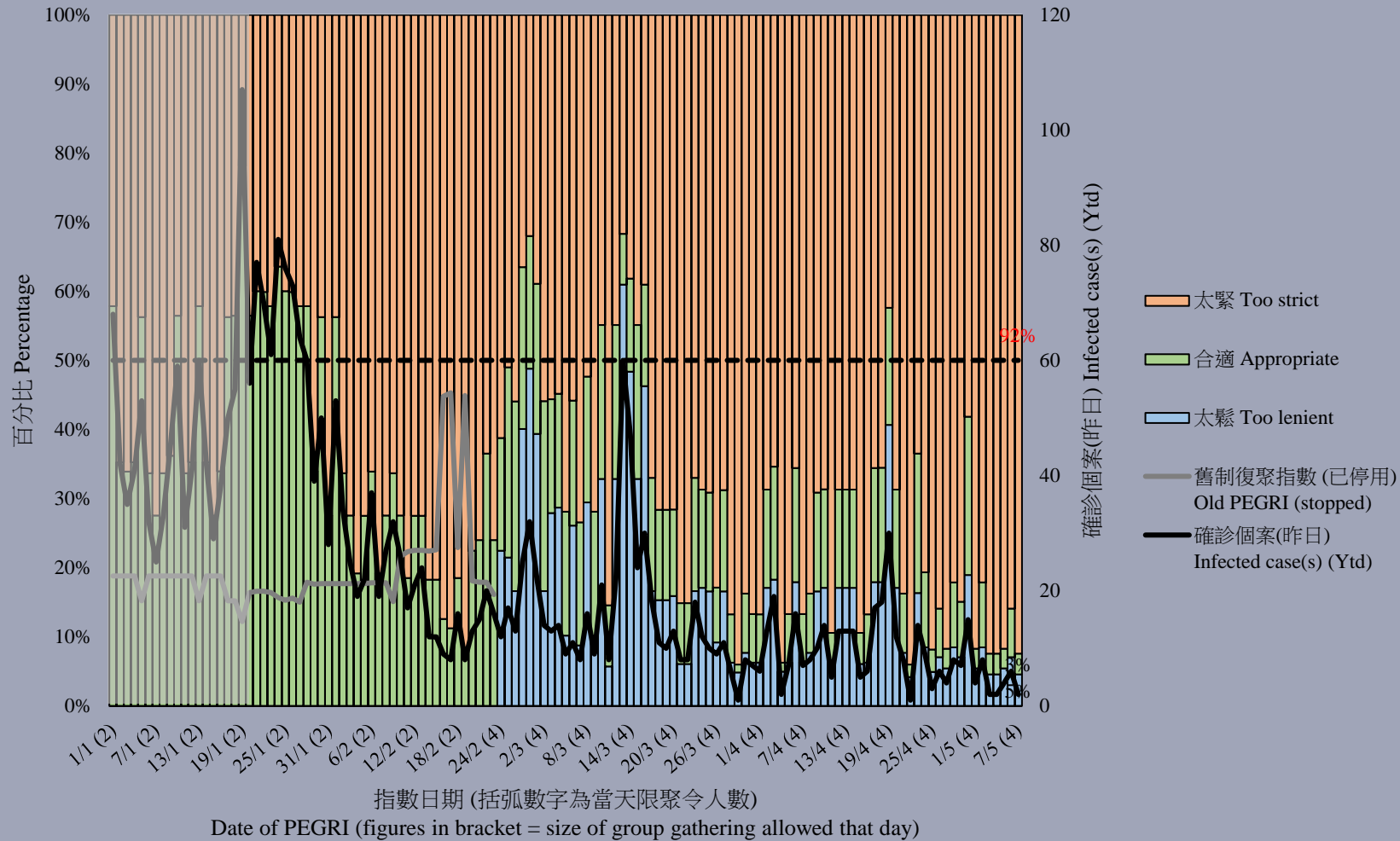


調查結果 - 限聚接受程度

Survey Result – Group Gathering Prohibition Acceptance Level

6

限聚接受程度 Group Gathering Prohibition Acceptance Level

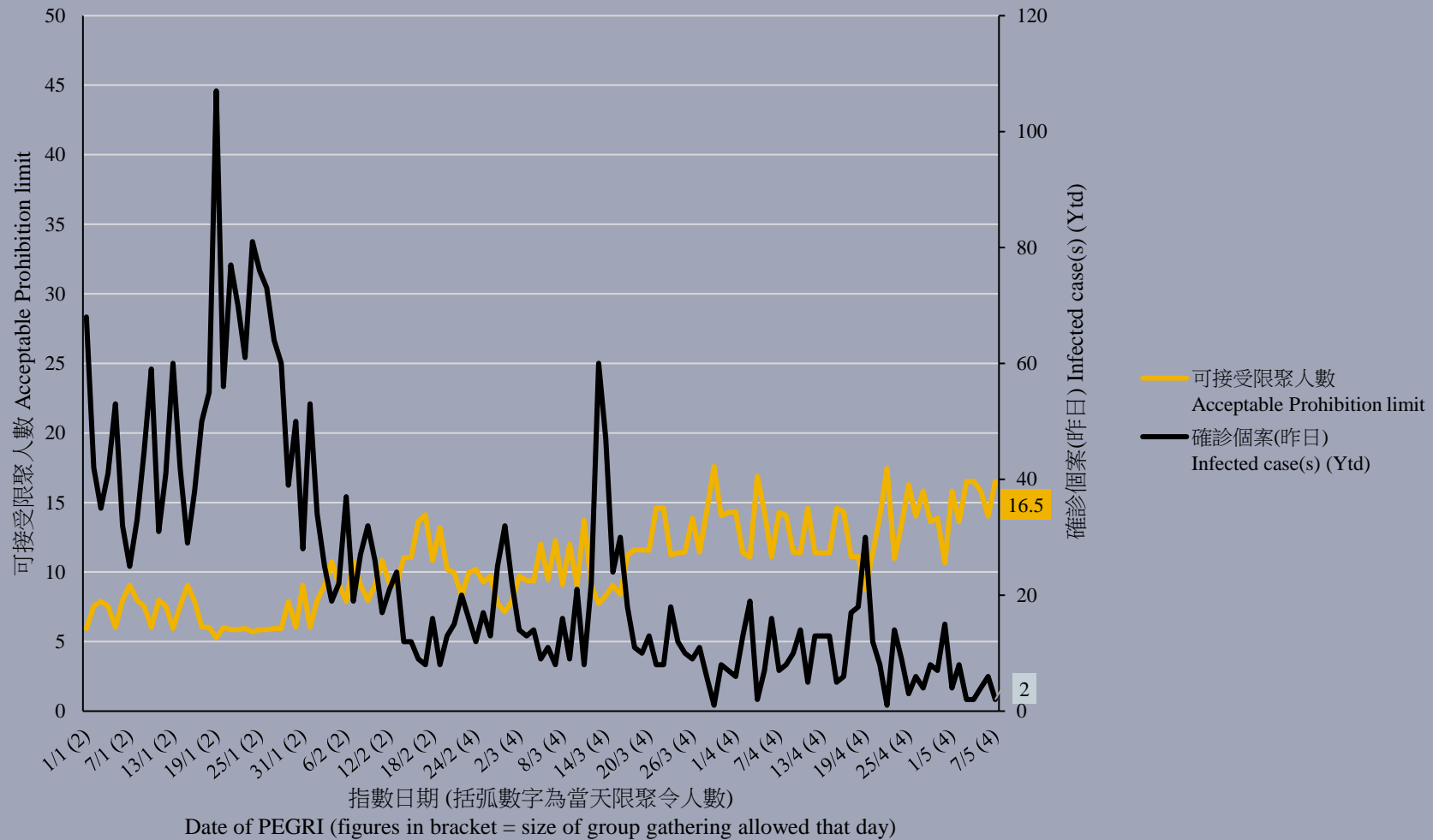


調查結果 - 限聚指數

Survey Result - Group Gathering Prohibition Index

7

限聚指數 Group Gathering Prohibition Index



限聚指數 - 分析評論

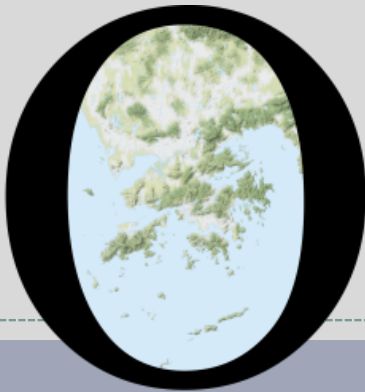
Group Gathering Prohibition Index – Commentary

8

中科監察研究員潘麒智指出，「抗疫政策亂七八糟，加上華大基因失職，令染毒者自由地遊走社區當中，進一步危害社會，變種病毒令第五波變得更兇猛，限聚令已經失去原先的意義，此絕非香港市民所願。現在領導抗疫的班子，如果願意及早聆聽及接受何柏良醫生的進言，疫情應該不至於此。」

KC Poon, researcher from the CHINAT Monitor, observed, “With the messy anti-epidemic policy and the failure of the BGI Group in performing its duties, virus carriers are now free to wander around, further endangering the community. The mutated virus has also made the fifth wave even more violent. The restriction on group gathering has lost its original meaningful, contrary to the will of the people. Had the team leading the fight against COVID listened to and accepted Dr Ho Pak-leung’s advice earlier, the epidemic might not have been as bad as it is.”

POP



HONG KONG PUBLIC OPINION PROGRAM

HONG KONG PUBLIC OPINION RESEARCH INSTITUTE

香港民意研究所 之 香港民意研究計劃

“We Hongkongers” Panel Survey

Latest Results

May 7, 2021

Contact Information - “We Hongkongers” Panel Survey

10

	HKPOP Panel
Date of survey	May 3, 3pm – May 6, 3pm
Survey method	Online survey
Target population	Hong Kong residents aged 12+
Total sample size	7,393
Response rate	7.8%
Sampling error	Sampling error of percentages at +/-1% at 95% confidence level
Weighting method	The figures are rim-weighted according to 1) gender-age distribution, educational attainment (highest level attended) distribution, economic activity status distribution of Hong Kong population and by District Councils population figures from Census and Statistics Department; 2) Voting results of District Councils Election from Registration and Electoral Office; 3) rating distribution of Chief Executive from regular tracking surveys.

Survey Result - “We Hongkongers” Panel Survey

11

- Latest survey period: 3-6/5/2021
- Question: Q1 The government will amend Hong Kong’s electoral system soon. In general, how much do you support or oppose these amendments?

	Pro-democracy camp supporters (n=6,268)	Non-pro-democracy camp supporters* (n=732)	Combined^ (n=7,000)
Strongly support	4%	18%	13%
Somewhat support	<1%	26%	17%
Half-half	<1%	11%	7%
Somewhat oppose	8%	10%	9%
Strongly oppose	89%	29%	50%
Don’t know / hard to say	<1%	6%	4%
Mean†	1.2	2.9	2.3

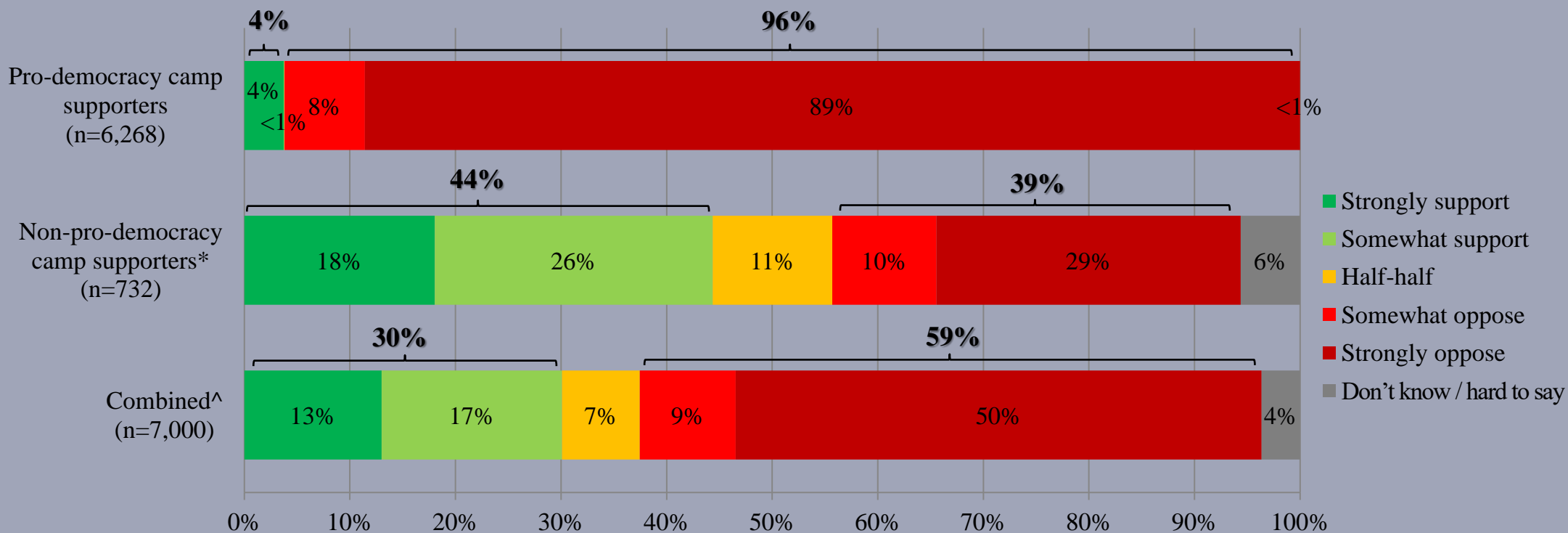
* Include: pro-establishment camp supporters, centrist supporters, no political inclination / politically neutral / do not belong to any camp

^ The aggregated figures come from adjusting the by-group weighted figures using ratio of “pan-democratic” vs “non-pan-democratic” collected in regular tracking survey.

† The mean value is calculated by quantifying all individual responses into 1, 2, 3, 4, 5 marks according to their degree of positive level, where 1 is the lowest and 5 the highest, and then calculate the sample mean.

Survey Result - “We Hongkongers” Panel Survey

- Latest survey period: 3-6/5/2021
- Question: Q1 The government will amend Hong Kong’s electoral system soon. In general, how much do you support or oppose these amendments?



* Include: pro-establishment camp supporters, centrist supporters, no political inclination / politically neutral / do not belong to any camp

^ The aggregated figures come from adjusting the by-group weighted figures using ratio of “pan-democratic” vs “non-pan-democratic” collected in regular tracking survey.

Survey Result - “We Hongkongers” Panel Survey

13

- Latest survey period: 3-6/5/2021
- Question: Q2 The government is planning to ban any public call to not vote or cast blank or spoilt votes through legislation. How much do you support or oppose such legislation?

	Pro-democracy camp supporters (n=6,268)	Non-pro-democracy camp supporters* (n=732)	Combined^ (n=7,000)
Strongly support	4%	30%	21%
Somewhat support	<1%	21%	14%
Half-half	3%	9%	7%
Somewhat oppose	12%	9%	10%
Strongly oppose	79%	28%	46%
Don't know / hard to say	2%	3%	3%
Mean†	1.4	3.2	2.5

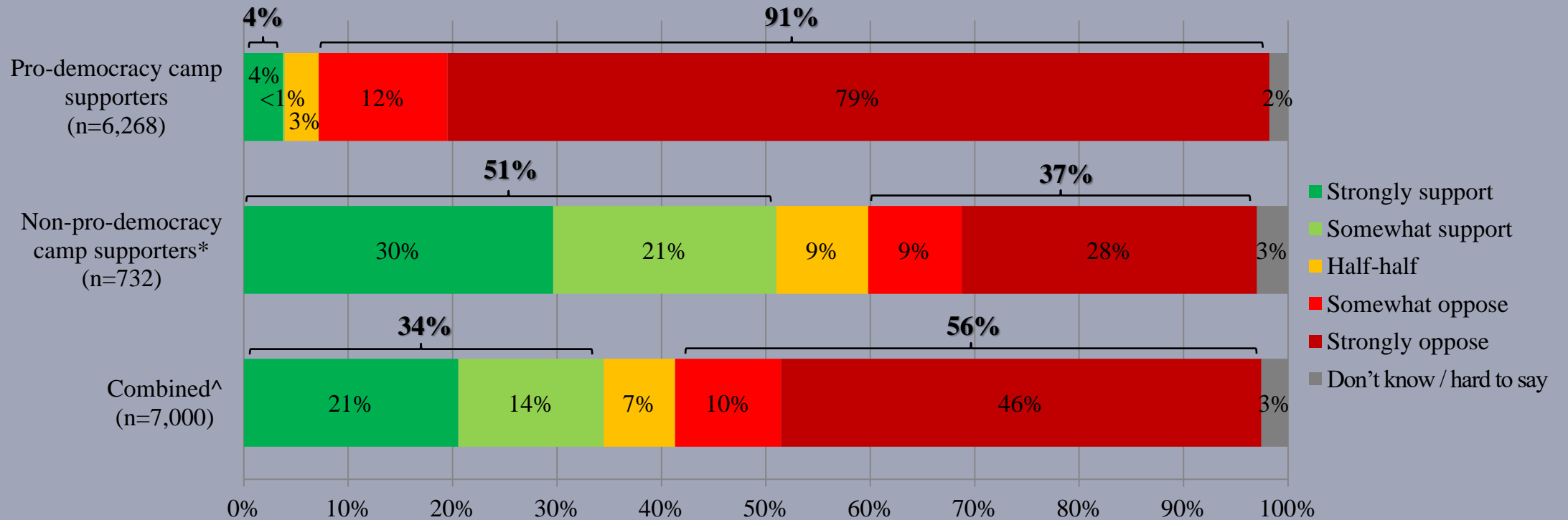
* Include: pro-establishment camp supporters, centrist supporters, no political inclination / politically neutral / do not belong to any camp

^ The aggregated figures come from adjusting the by-group weighted figures using ratio of “pan-democratic” vs “non-pan-democratic” collected in regular tracking survey.

† The mean value is calculated by quantifying all individual responses into 1, 2, 3, 4, 5 marks according to their degree of positive level, where 1 is the lowest and 5 the highest, and then calculate the sample mean.

Survey Result - “We Hongkongers” Panel Survey

- Latest survey period: 3-6/5/2021
- Question: Q2 The government is planning to ban any public call to not vote or cast blank or spoilt votes through legislation. How much do you support or oppose such legislation?



* Include: pro-establishment camp supporters, centrist supporters, no political inclination / politically neutral / do not belong to any camp

^ The aggregated figures come from adjusting the by-group weighted figures using ratio of “pan-democratic” vs “non-pan-democratic” collected in regular tracking survey.