



HONG KONG PUBLIC OPINION RESEARCH INSTITUTE
香港民意研究所

Tel 電話: (852) 3844 3111

Fax 傳真: (852) 3705 3361

Website 網址: <https://www.pori.hk>

Address: Units 9-11, 6/F, Tower B, Southmark, 11 Yip Hing Street, Wong Chuk Hang

地址: 黃竹坑業興街 11 號南滙廣場 B 座 6 樓 9-11 室

2024 年 5 月 7 日 新聞公報

香港民研發放「民情指數之按教育程度分析」

特別宣佈

香港民意研究所（香港民研）剛於 5 月 4 日慶祝成立五周年，並且公開承諾會全力以赴，繼續發揚五四精神。民研同時決定，每天發放至少一個社交媒體貼文，直至 6 月底再檢討。民研會繼續採用嶄新的民意研究方法和彙報形式，透過「民意數據查冊平台」分享更多品種的研究數據，包括題目的質性回應、慎思民調的討論原文，以及更多之前未有發表的項目數字和原始數據，大部分可以免費下載，其餘最低消費\$100，歡迎到民研網頁 <https://www.pori.hk>選購。

最新數據

香港民研今日發放「民情指數第 6.30 號報告」，題為「民情指數之按教育程度分析」，屬於第二代民情指數的第三十份報告。民情指數的正常水平設定值為 100，標準差設定為 15，請[點擊這裏](#)閱讀民情指數的計算方法。

是次數據分析的覆蓋範圍是 2007 年 7 月至 2024 年 3 月，期間我們以隨機抽樣真人電話訪問了約四十萬人。結果顯示，雖然自 2007 年起的整體民情有起有跌，但三個教育程度組別歷年的民情指數走勢大致相同：在 2007 年下半年同時錄得較高數值後，三個組別民情在其後五年先有所下跌，後保持平穩，且組別之間差異甚少。在 2012 至 2017 年間，各組別個別發展：小學或以下教育程度市民民情有所改善，中學教育程度市民保持平穩，擁有大專或以上教育程度市民民情則繼續向下。及至 2017 年下半年林鄭月娥上任，三個組別民情均同時升至高位，但隨即步入跌軌，並於 2019 年下半年同步急挫至歷史低位，然後再逐漸回升至 2023 年的近年新高，2024 年上半年初步數字暫見平穩，沒有出現大上大落。

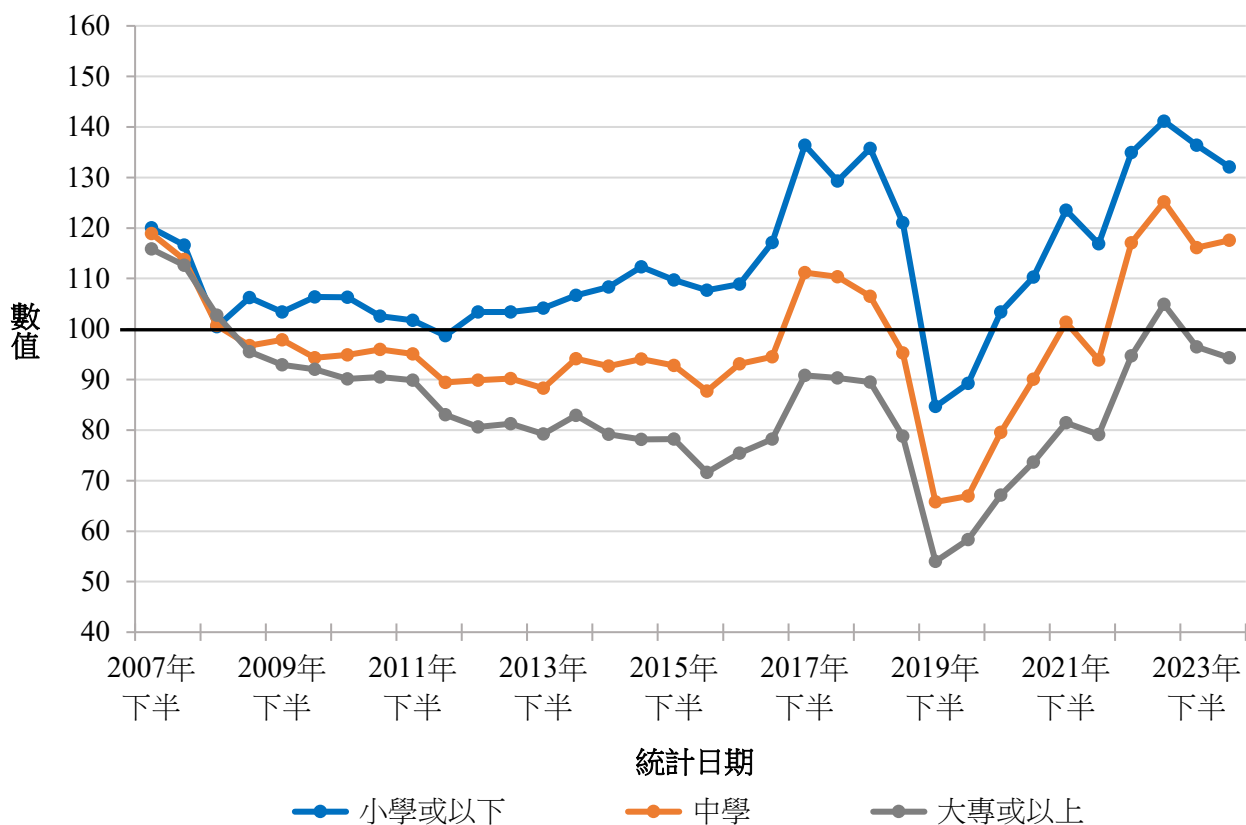
小學或以下教育程度市民的心情在過去多年都相對正面，除 2012 上半年及 2019 下半至 2020 上半年外，其民情指數一直維持在正常值 100 分以上，2023 上半年更攀升至高於 140 分的歷史高位。相反，擁有大專或以上教育程度市民的心情則長期維持負面，除 2023 上半年外，其民情指數在 2008 年下半年後一直低於正常值水平，在 2019 下半年更跌至只有 54 分的極低位。至於中學教育程度市民的民情指數於歷年大部分時間均位處中間位置，但亦較常維持在正常值水平 100 分以下。

至於 2007 年以前的情況，就有待將來再深入分析。以下是有關分析的數表及圖表：

數表：不同教育程度市民之民情指數（2007-2024 半年平均數）

半年期	樣本數目	小學或以下	中學	大專或以上
2007 年下半	13,157	120.0	118.9	115.8
2008 年上半	15,361	116.6	113.8	112.7
2008 年下半	14,302	100.4	100.7	102.8
2009 年上半	14,138	106.2	96.7	95.5
2009 年下半	14,104	103.4	97.9	92.9
2010 年上半	12,150	106.4	94.3	92.0
2010 年下半	14,144	106.3	94.9	90.1
2011 年上半	13,291	102.5	96.0	90.5
2011 年下半	15,209	101.7	95.1	89.9
2012 年上半	14,259	98.7	89.4	83.1
2012 年下半	12,174	103.4	89.9	80.6
2013 年上半	12,229	103.4	90.2	81.2
2013 年下半	12,154	104.1	88.3	79.2
2014 年上半	12,255	106.6	94.1	82.9
2014 年下半	12,147	108.3	92.7	79.2
2015 年上半	12,349	112.3	94.0	78.1
2015 年下半	11,108	109.7	92.8	78.2
2016 年上半	12,088	107.7	87.7	71.7
2016 年下半	12,074	108.9	93.1	75.4
2017 年上半	12,128	117.1	94.5	78.2
2017 年下半	12,200	136.4	111.2	90.8
2018 年上半	12,092	129.3	110.4	90.3
2018 年下半	12,072	135.7	106.5	89.5
2019 年上半	12,151	121.0	95.3	78.8
2019 年下半	12,297	84.7	65.8	54.0
2020 年上半	12,062	89.2	67.0	58.3
2020 年下半	12,206	103.4	79.5	67.1
2021 年上半	12,086	110.3	90.1	73.6
2021 年下半	12,080	123.5	101.4	81.5
2022 年上半	12,059	116.9	93.8	79.1
2022 年下半	6,107	134.9	117.0	94.7
2023 年上半	6,056	141.2	125.2	104.9
2023 年下半	6,689	136.4	116.1	96.5
2024 年上半 (初步數字)	2,339	132.1	117.6	94.3
樣本總數	403,317	65,956	188,428	144,483

圖表：不同教育程度市民之民情指數走勢（2007-2024 半年平均數）



2024 年 5-6 月新聞發佈活動預告（暫定）

- 5 月 14 日（星期二）新聞公報和數據更新：民情指數之按性別與年齡分析
- 5 月 21 日（星期二）新聞公報和數據更新：特首及政府民望
- 5 月 30 日（星期四）下午三時新聞發佈會：信任及信心指標、社會幸福指標
- 6 月 4 日（星期二）新聞公報和數據更新：民情指數之按經濟活動狀況分析
- 6 月 11 日（星期二）新聞公報和數據更新：民情指數之按統獨傾向分析
- 6 月 18 日（星期二）新聞公報和數據更新：特首及政府民望
- 6 月 26 日（星期三）下午三時新聞發佈會：「香港民研意見群組」網上問卷調查結果、「民情指數第 6.34 號報告」



HONG KONG PUBLIC OPINION RESEARCH INSTITUTE
香港民意研究所

Tel 電話: (852) 3844 3111

Fax 傳真: (852) 3705 3361

Website 網址: <https://www.pori.hk>

Address: Units 9-11, 6/F, Tower B, Southmark, 11 Yip Hing Street, Wong Chuk Hang

地址: 黃竹坑業興街 11 號南滙廣場 B 座 6 樓 9-11 室

Press Release on May 7, 2024

HKPORI releases “PSI per Educational Attainment”

Special Announcement

Hong Kong Public Opinion Research Institute (HKPORI) has just celebrated its 5th Anniversary on May 4 and remains fully committed to the May Fourth Spirit. Meanwhile, we will release at least one social media post every day until the end of June. We will continue to develop new products and share new data via our “Poll Data Enquiry Platform”, including qualitative answers, Deliberative Poll transcriptions, along with newly published survey figures and datasets. Most of them are free, others can be purchased at just \$100. Please visit <https://www.pori.hk/>.

Latest Findings

HKPORI today releases its “PSI Report No. 6.30”, titled “PSI per Educational Attainment”, which is the thirtieth release of PSI v2.0. The normal level of the PSI is set at 100 and standard deviation at 15. Please [click here](#) to read the computation method of the PSI.

This analysis covers the period from July 2007 to March 2024, during which we interviewed around 400,000 respondents by random telephone survey conducted by real interviewers. Results show that despite the ups and downs of overall public sentiment since 2007, the trends of PSI among the three educational attainment groups are highly similar over the years. After registering relatively high scores in 2007H2, public sentiment of all three groups first dropped and then remained rather stable in the five years that followed, with minimal difference between groups. Then between 2012 and 2017, the three groups developed in separate directions: sentiment of people with primary education or below kept improving, those with secondary educational attainment did not change much, while sentiment of people with tertiary education or above continued to move downward. In 2017H2, all three groups registered their higher PSI scores when Carrie Lam took office. But soon started to drop and in 2019H2, their PSI all plummeted to their historical lows, then gradually rebounded to a recent record high in 2023. Preliminary figures of 2024H1 show stability, without any major ups or downs.

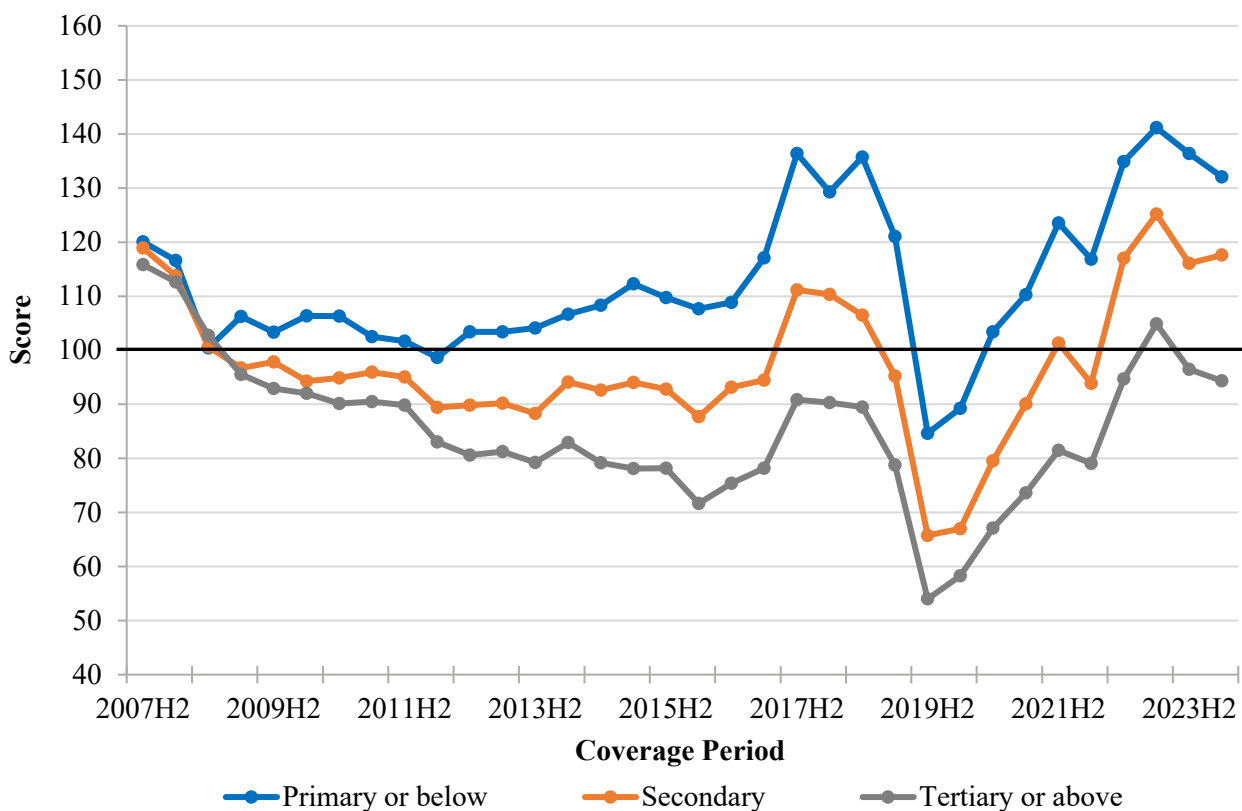
People with primary education or below have been feeling pretty good over the past many years, with their PSI staying above the normal level of 100 except in 2012H2 and from 2019H2 to 2020H1. Their figures even climbed over 140 marks at its all-time historical high in 2023H1. On the contrary, people with tertiary education or above have been feeling quite negatively the whole time. Except in 2023H1, their PSI has remained below the normal level after 2008H2 and even plummeted to an extremely low level at only 54 marks in 2019H2. For people with secondary educational attainment, their PSI has stayed in the middle position most of the time, with their figures also often staying below the normal level of 100.

As for the situation before 2007, we will leave them to future analyses. The following are the summary table and chart of the analysis:

Summary table: PSI among people with different educational attainments (2007-2024; half-yearly averages)

Half-year period	Sample size	Primary or below	Secondary	Tertiary or above
2007H2	13,157	120.0	118.9	115.8
2008H1	15,361	116.6	113.8	112.7
2008H2	14,302	100.4	100.7	102.8
2009H1	14,138	106.2	96.7	95.5
2009H2	14,104	103.4	97.9	92.9
2010H1	12,150	106.4	94.3	92.0
2010H2	14,144	106.3	94.9	90.1
2011H1	13,291	102.5	96.0	90.5
2011H2	15,209	101.7	95.1	89.9
2012H1	14,259	98.7	89.4	83.1
2012H2	12,174	103.4	89.9	80.6
2013H1	12,229	103.4	90.2	81.2
2013H2	12,154	104.1	88.3	79.2
2014H1	12,255	106.6	94.1	82.9
2014H2	12,147	108.3	92.7	79.2
2015H1	12,349	112.3	94.0	78.1
2015H2	11,108	109.7	92.8	78.2
2016H1	12,088	107.7	87.7	71.7
2016H2	12,074	108.9	93.1	75.4
2017H1	12,128	117.1	94.5	78.2
2017H2	12,200	136.4	111.2	90.8
2018H1	12,092	129.3	110.4	90.3
2018H2	12,072	135.7	106.5	89.5
2019H1	12,151	121.0	95.3	78.8
2019H2	12,297	84.7	65.8	54.0
2020H1	12,062	89.2	67.0	58.3
2020H2	12,206	103.4	79.5	67.1
2021H1	12,086	110.3	90.1	73.6
2021H2	12,080	123.5	101.4	81.5
2022H1	12,059	116.9	93.8	79.1
2022H2	6,107	134.9	117.0	94.7
2023H1	6,056	141.2	125.2	104.9
2023H2	6,689	136.4	116.1	96.5
2024H1 (Preliminary figures)	2,339	132.1	117.6	94.3
Total sample size	403,317	65,956	188,428	144,483

Chart: PSI among people with different educational attainments (2007-2024; half-yearly averages)



Press Events Forecast for May-June 2024 (Tentative)

- May 14 (Tuesday) press release and figures update: PSI per gender and age
- May 21 (Tuesday) press release and figures update: Popularities of CE and SAR Government
- May 30 (Thursday) at 15:00, press conference: Trust and Confidence Indicators, Social Well-being Indicators
- June 4 (Tuesday) press release and figures updates: PSI per Economic Activity Status
- June 11 (Tuesday) press release and figures update: PSI per Centrality
- June 18 (Tuesday) press release and figures update: Popularities of CE and SAR Government
- June 26 (Wednesday) at 15:00, press conference: “POP Panel” Online Survey Results, “PSI Report No. 6.34”